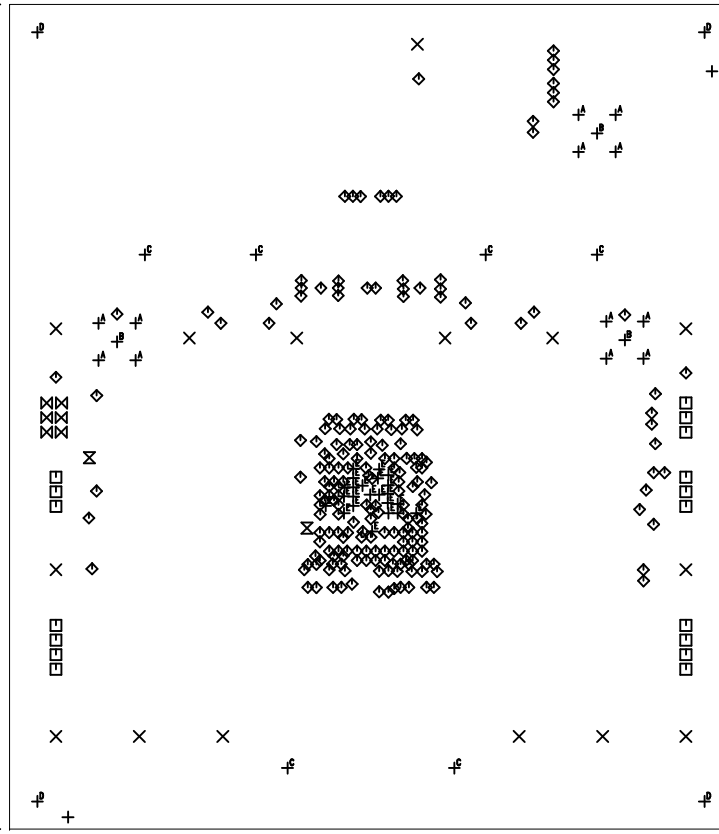


4.45"



FAB DRAWING

SIZE	QTY	SYM	PLATED	TOL
0.187	4	\oplus^D	NO	+/-0.003
0.095	15	\times	YES	+/-0.003
0.031	17	\square	YES	+/-0.003
0.01	207	\diamond	YES	+/-0.003
0.015	2	\boxtimes	YES	+/-0.003
0.03937	6	\boxtimes	YES	+/-0.003
0.067	12	\oplus^A	YES	+/-0.003
0.06	3	\oplus^B	YES	+/-0.003
0.215	6	\oplus^C	YES	+/-0.003
0.07	2	\oplus	NO	+/-0.003
0.008	23	\oplus^E	YES	+/-0.003

LINEAR TECHNOLOGY
DC1663A-LTM4628EV
HIGH EFFICIENCY, DUAL 8A
STEP-DOWN μ MODULE
DATE: 06-17-10

3.9"

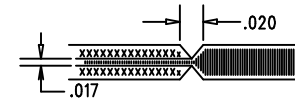
REVISION HISTORY				
ECO	REV	DESCRIPTION	APP. ENG.	DATE
-	1	PRODUCTION	JEFF Z	06-17-10

LAYER STRUCTURE

	LAYER 1 (COMPONENT SIDE)
	LAYER 2 (GND1)
	LAYER 3 (GND2)
	LAYER 4 (SOLDER SIDE)

NOTES: UNLESS OTHERWISE SPECIFIED

- FAB PER IPC-A-600.
- MATERIAL: -EPOXY FIBERGLASS, NEMA GRADE FR-4
-FINISHED THICKNESS TO BE 0.062" +/- .005"
-TOTAL OF 4 LAYERS WITH 2 OZ. CU ON THE OUTER LAYERS
AND 1 OZ. CU ON THE INNER LAYERS.
-FLAMMABILITY RATING: 94 V-0 MINIMUM.
- SIZE: CUT TO DIMENSIONS AND TOLERANCES SHOWN.
0.00" ARE PRIMARY DATUMS.
- DRILLING: -DRILL HOLES PER SCHEDULE. PLATE THROUGH
HOLES WITH COPPER, 0.001" THICK MIN.
-ALL HOLE SIZES ARE SPECIFIED AFTER PLATING.
-HOLE LOCATION TOLERANCES ARE +/-0.003"
IN RELATION TO CENTER
- FINISH: -SMOBC USING LPI BOTH SIDES, COLOR GREEN.
-GOLD IMMERSION BOTH SIDES.
(LEAD FREE SOLDER CAN BE USED FOR PROTOTYPE)
-FOR SILKSCREEN: BOTH SIDES USE WHITE NON-CONDUCTIVE INK.
- DO NOT ALTER ARTWORK e.g. TO ADD LOGO OR DATE CODE.
PAD SIZE CAN BE MODIFIED TO MEET END FINISH.
- PCBS ARE TO BE RoHS COMPLIANT.
- SCORING FOR PANELIZED PCB:



- DESIGN HAS SOLDER MASK DEFINED PADS ON U1.
U1 SOLDER MASK SIZE IS 0.025" THE SAME AS PAD U1.
DO NOT CHANGE ANY SOLDER MASK SIZE ON THIS COMPONENT.

UNLESS OTHERWISE SPECIFIED		APPROVALS				1630 MCCARTHY BLVD MILPITAS, CA 95035 PH: (408)432-1900 www.linear.com LTC CONFIDENTIAL- FOR CUSTOMER USE ONLY	
DIMENSIONS ARE IN INCHES		PCB DES.	AK				
TOLERANCES:		APP ENG.	JEFF Z.	TITLE: FABRICATION DRAWING			
0.XX" = ±0.01"				HIGH EFFICIENCY, DUAL 8A			
0.XXX" = ±0.005"				STEP-DOWN μ MODULE			
INTERPRET DIM AND TOL				SIZE	IC NO.	LTM4628EV	REV
PER ASME Y14.5M-1994				N/A		DEMO CIRCUIT 1663A	1
THIRD ANGLE PROJECTION				SCALE = NONE		FILENAME: DC1663A-1.PCB	SHT 1 OF 1